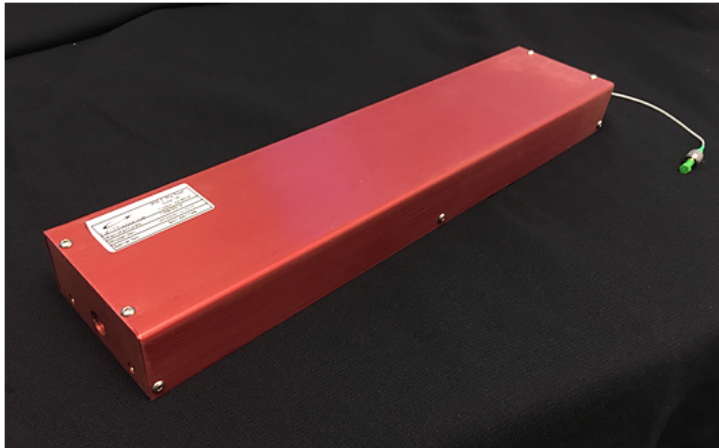


Amplifier Gain Block

High Power Fiber Amplifier OEM Module



Features

- High Gain in Short Length (cm)
- Compact OEM module package for system integrators
- Input spliced to commercial PM (LMA) Double-cladding fiber
- Very large MFA available
- Supports up to 100 W output power
- Supports greater than 500kW peak power
- Center wavelength over 1018 - 1080nm
- Near-single mode ($M^2 < 1.3$)
- Polarization Maintaining (PER >15dB)
- Hermetic sealing available
- Collimated output available
- Fully customizable

PRODUCT SPECIFICATIONS

Parameter	Value
Wavelength	1018nm-1080nm; 1528nm-1575nm
Output Average Power	Up to 100 W
Output Peak Power	≥ 500 kW
Gain (nominal)	≥ 16 dB
Optical to Optical Efficiency	≥ 45 % (absolute) , ≥ 55 % (slope)
Polarization Extinction Ratio (PER)	≥ 15 dB
Beam Quality	$M2 \leq 1.5$ (typically ≤ 1.3 depending on wavelength)
Gain Fiber Length	≥ 8 cm (nominally 20 cm)
Gain Fiber Mode Field Area (MFA)	$\geq 500 \mu\text{m}^2$ (other MFA available upon request)
Input Double-Cladding Silica Fiber (internally spliced)	Nufern PM-GDF-1550 , PM-GDF-5/130, PLMA-GDF-10/125-M, PLMA-GDF-20/130 , PLMA-GDF-25/250-M (other fibers available upon request)
Package Dimension (nominal)	3" (W) x 1" (H) x 14"(L)
Cooling	Water, Air

NP Photonics Amplifiers are protected by a 12-month warranty. All components and assemblies are unconditionally warranted to be free of defects in workmanship and materials for the warranty period, beginning from the date of shipment. This warranty is in lieu of all other warranties, expressed or implied, and does not cover incidental or consequential loss. This warranty does not apply to devices damaged due to operating conditions outside of the specified parameters. Modified warranties for OEM customers are available.

NP Photonics, Inc.

9030 S. Rita Road, Suite 120 - Tucson, AZ 85747 - USA

Phone: 520-799-7400 Fax: 520-799-7403

E-mail: info@np Photonics.com www.np Photonics.com

Specifications subject to change without notice.

